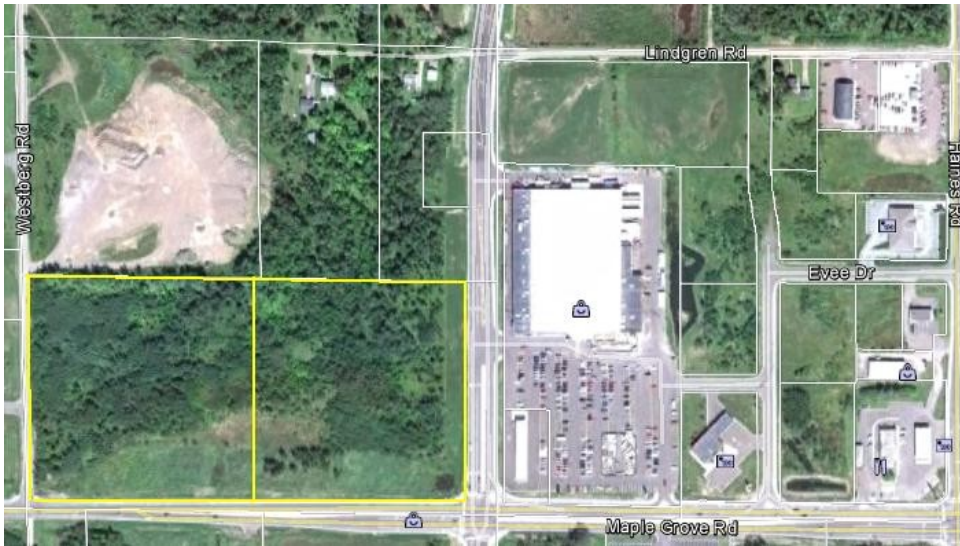




301 W 1st Street, Suite 715, Duluth, MN (218) 722-5556

FOR SALE: XXX Maple Grove Road



Hermantown, MN

One of the best undeveloped properties in Hermantown! Located directly west of Sam's Club.

Features:

- **Corner lot with high visibility from Maple Grove Road & Loberg Road**
- **Zoned Commercial/Industrial**
- **Eastern 7.99 acres adjacent to Sam's Club \$699,000**
- **Western 7.99 acres with Westberg Road Frontage \$395,000**

Asking price: \$395,000 & \$699,000

Contact: Sandy Hoff • (218) 722-5556