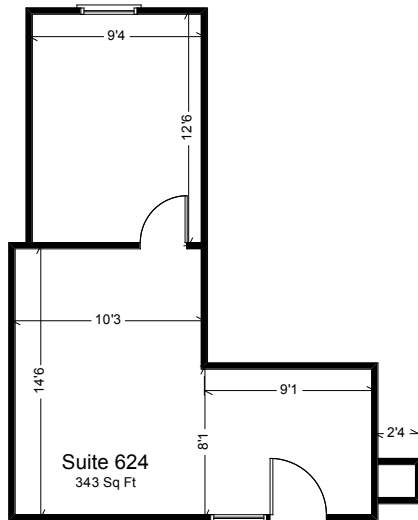


## ***BOARD OF TRADE***

301 West 1st Street  
Duluth, Minnesota 55802

- **SUITE #624**
- **SQUARE FEET: 343**
- **LOCATION: 6TH FLOOR**
- **"L" SHAPED OFFICE**
- **VIEW OF DULUTH'S SKYLINE**
- **LARGE RECEPTION AREA**
- **ONE PRIVATE OFFICE**



The *Board of Trade* is one of Duluth's finest historic buildings. The exterior brings back the days of fine stone artisans. A mammoth arch entry leads to an ornate marble and brass staircase.

The building has three elevators, large windows, and hosts a wide variety of professional offices. Enjoy lunch at the Exchange Deli, and park in one of the three lots all close by.

Suite 624 has a large reception area with a small closet. Built in counter space next to the window in the private office. Call for your personal tour today.

*Contact:*

**Alanna Soukkala**

**218.722.5556**

[asoukkala@fisalter.com](mailto:asoukkala@fisalter.com)

210 West Michigan Street

Suite 300

Duluth, MN 55802